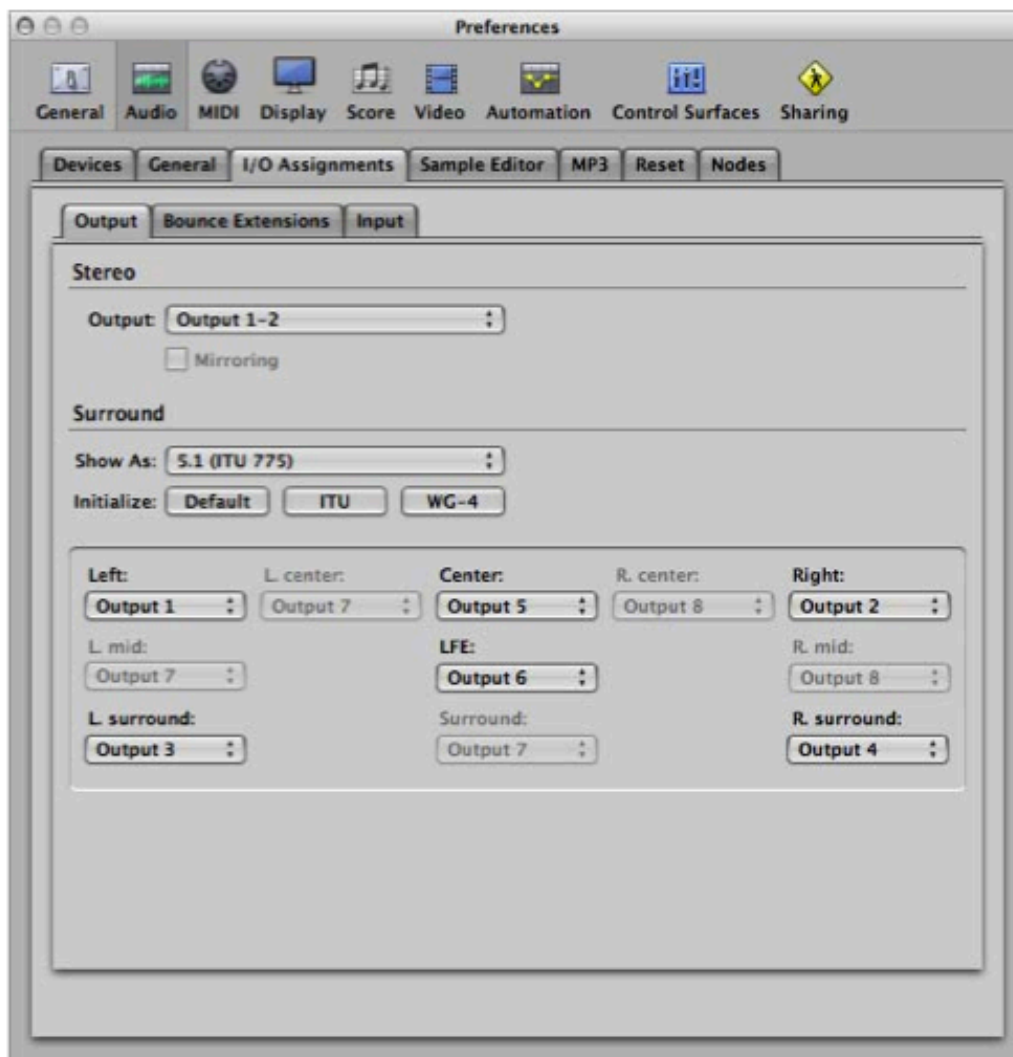


## Using Surround

### in Logic Audio

Outputs can be assigned in the Preferences>I/O Assignments:



- Settings/ Audio/ Surround Format: *select surround type*
- Preferences/ Audio/ Output Device/ *select your multi-channel I/O*
- Preferences/ Audio/ I/O Assignments/ Output/ *select surround type, and output assignments*

## Create surround channels or assign exiting channels to surround:

### To set a channel strip's output format to surround

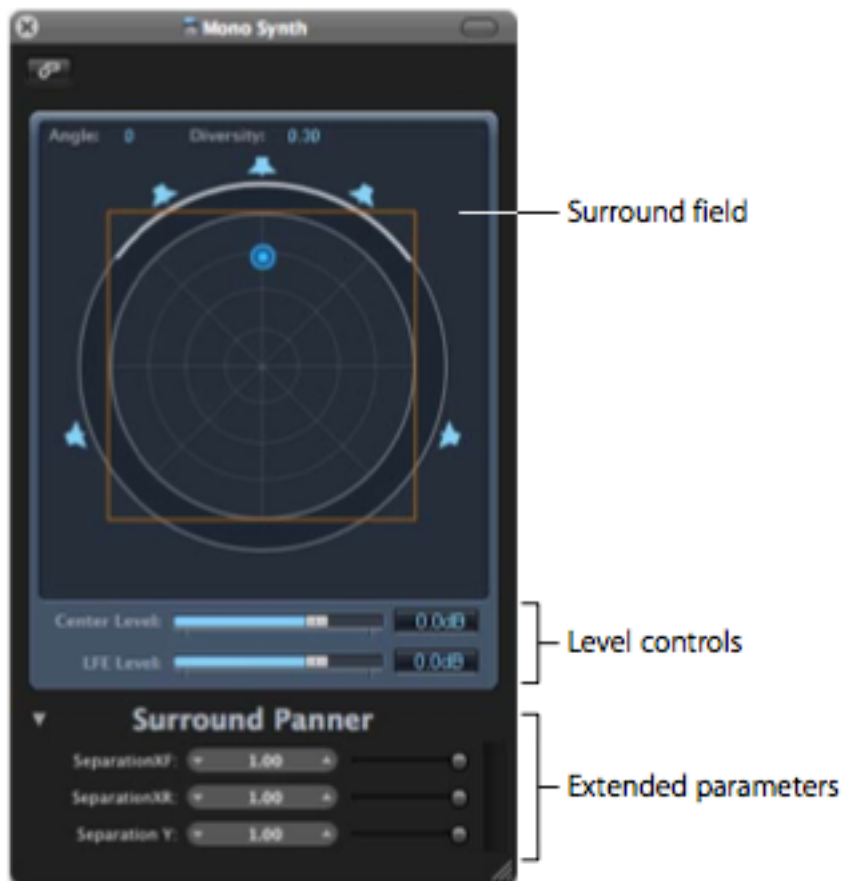
- Click-hold the Output slot of the channel strip, and choose Surround from the pop-up menu.



The Pan control of the channel strip is replaced by a two-dimensional surround control. The loudspeakers are represented by colored dots and the pan position is indicated by a white dot that can be grabbed and moved.



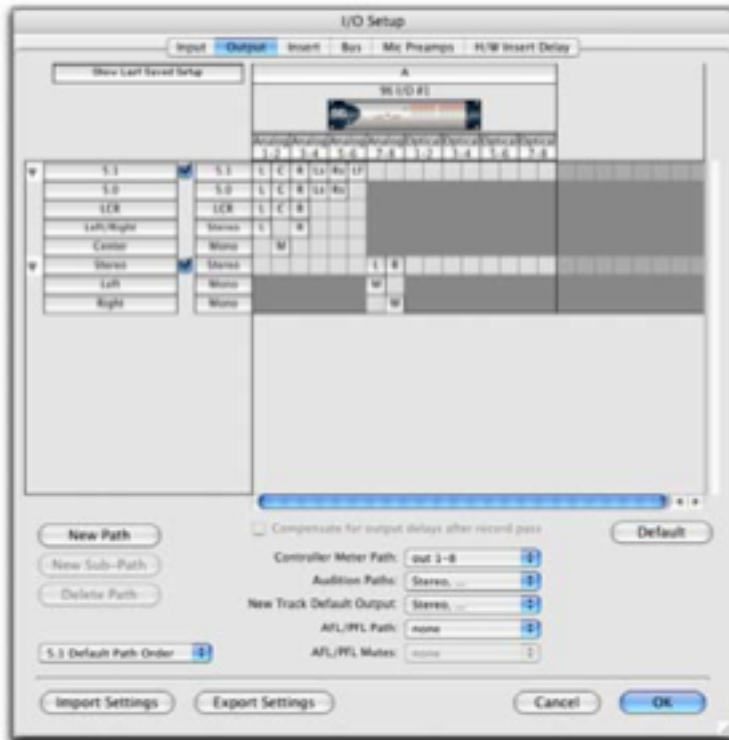
To use the Surround Panner, Double click it in the channel strip:



If the channel is stereo a slightly different Panner will appear. It has three 'pucks'; L, R, and L+R.

## In Pro Tools

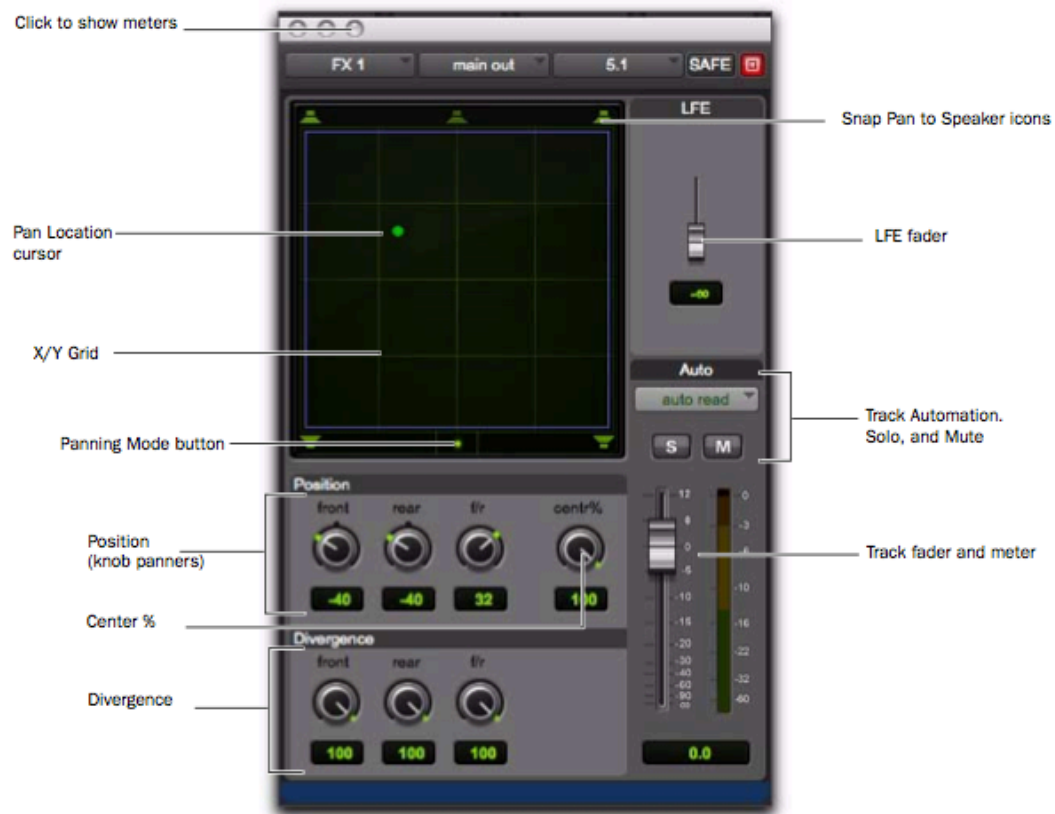
Outputs can be assigned in I/O Setup:



Create surround channels or assign exiting channels to surround:



To use the Surround Panner, Click the Output Window button (it's the small fader at the right edge of the Output selector for a track in the Mix or Edit window (I/O View):



Terms:

Location Description	Logic Audio	Pro Tools
Pan Position	Angle	Position
Spread	Diversity	Divergence
L-R to Centre Balance	Centre Level	Centre %
Stereo Width (of stereo input signal)	Spread	---